

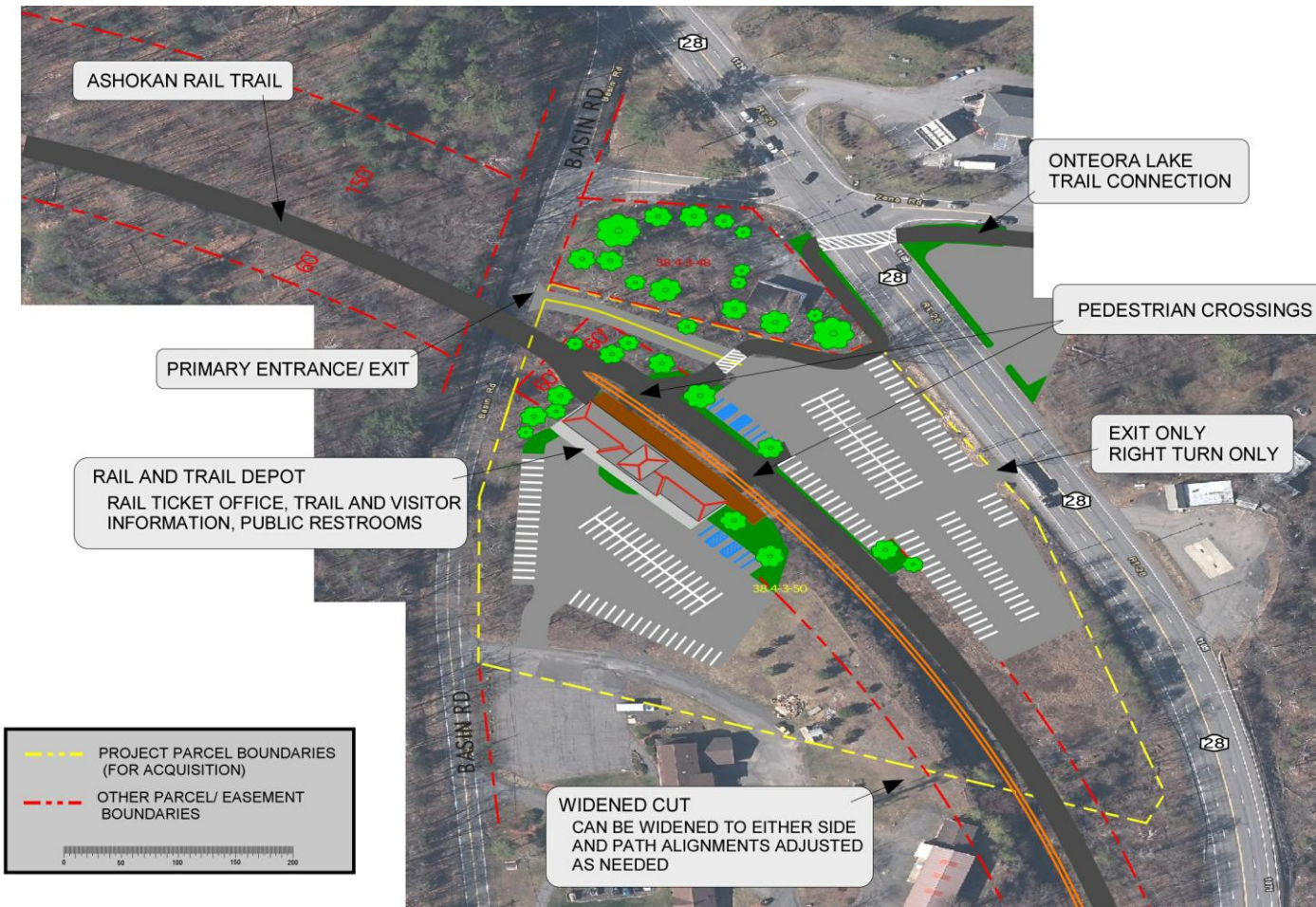


CMRR Needs Your Help!

- The CMRR's Scenic Train ride currently ends in the woods and then makes the return trip to Kingston Plaza. There is no option to travel further west or to access the [Ashokan Rail Trail](#).
 - The CMRR is asking its landlord, Ulster County, permission to extend its operable track another two miles to MP 10 and build a new Rail and Trail station there.
 - The Basin Road Rail and Trail Station will allow passengers to combine their train ride with a short walk, or bike ride, to access the [Ashokan Rail Trail](#), and give the CMRR a proper destination.
 - The tracks are in place and waiting for the CMRR to return them to service.
 - The best way you can support the CMRR to reach this goal is to send a letter or email of support to the Ulster County Legislature (ask to cc all Legislators) and UC Executive, Jen Metzger.
 - Please tell them you enjoyed your ride on the CMRR and want it to go further to connect to the [Ashokan Rail Trail](#). Be sure to mention your name and hometown when you write:
- | | |
|---|--|
| • Clerk of the Ulster County Legislature | Ulster County Executive Jen Metzger |
| • 244 Fair Street, 6 th Floor | 244 Fair Street, 6 th Floor |
| • Kingston, New York 12401 | Kingston, New York 12401 |
| • vfab@co.ulster.ny.us | exec@co.ulster.ny.us |
| • cc: ftan@co.ulster.ny.us | cc: bmas@co.ulster.ny.us |
| • cc: info@catskillmountainrailroad.com | |
| • Many Thanks, CMRR. See Full Plan at: www.CatskillMountainRailroad.com/cmrr-expansion/ | |



CATSKILL MOUNTAIN RR Extension to Basin Road



New Basin Road Rail and Trail Station